



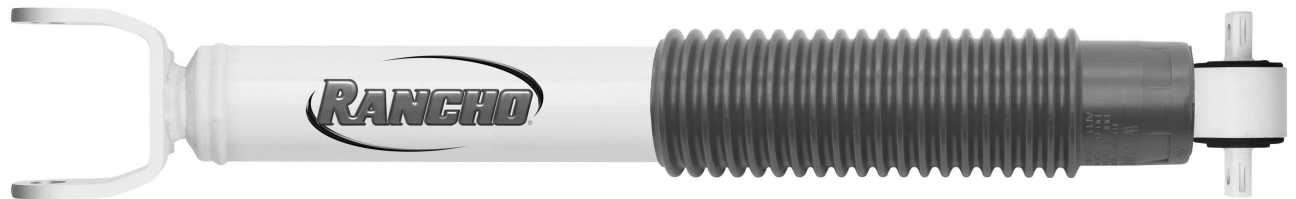
**CLEV - LS Type**



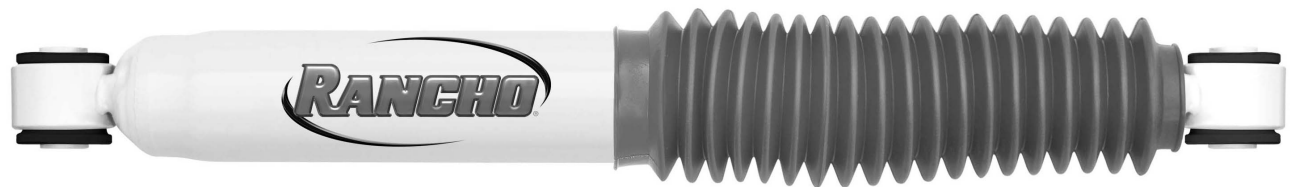
**CLEV - L Type**



**CLEV - S Type**



**CLEV - XP Type**



**LS Type - LS Type**

Representative images are used for shock configuration. All measurements are in inches. Boot/Dust Shield end is upper. Rancho® only engineers its shock absorbers for the applications listed in this catalog. Misapplication of Rancho® shock absorbers will result in reduced handling and braking ability and voids warranty. Product specifications subject to change without notice.



**LS Type - L Type**



**LS Type - S Type**



**LS Type - XP Type**



**L Type - LS Type**



**L Type - L Type**

Representative images are used for shock configuration. All measurements are in inches. Boot/Dust Shield end is upper. Rancho® only engineers its shock absorbers for the applications listed in this catalog. Misapplication of Rancho® shock absorbers will result in reduced handling and braking ability and voids warranty. Product specifications subject to change without notice.



**L Type - S Type**



**L Type - XP Type**



**S Type - LS Type**

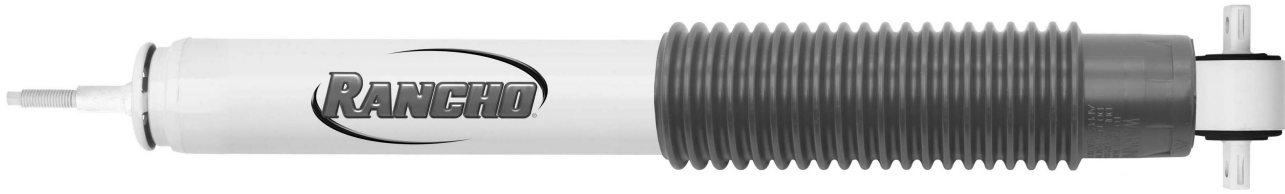


**S Type - L Type**



**S Type - S Type**

Representative images are used for shock configuration. All measurements are in inches. Boot/Dust Shield end is upper. Rancho® only engineers its shock absorbers for the applications listed in this catalog. Misapplication of Rancho® shock absorbers will result in reduced handling and braking ability and voids warranty. Product specifications subject to change without notice.



**S Type - XP Type**



**XP Type - LS Type**



**XP Type - L Type**



**XP Type - S Type**



**XP Type - XP Type**

Representative images are used for shock configuration. All measurements are in inches. Boot/Dust Shield end is upper. Rancho® only engineers its shock absorbers for the applications listed in this catalog. Misapplication of Rancho® shock absorbers will result in reduced handling and braking ability and voids warranty. Product specifications subject to change without notice.



**Strut Type SS1**



**Strut Type SS2**



**Strut Type SS3**



**Strut Type SS4**

Representative images are used for shock configuration. All measurements are in inches. Boot/Dust Shield end is upper. Rancho® only engineers its shock absorbers for the applications listed in this catalog. Misapplication of Rancho® shock absorbers will result in reduced handling and braking ability and voids warranty. Product specifications subject to change without notice.



**Strut Type SS5**



**Strut Type SS6**



**Strut Type SS7**



**Strut Type B4**

Representative images are used for shock configuration. All measurements are in inches. Boot/Dust Shield end is upper. Rancho® only engineers its shock absorbers for the applications listed in this catalog. Misapplication of Rancho® shock absorbers will result in reduced handling and braking ability and voids warranty. Product specifications subject to change without notice.



**Strut Type B8**



**Strut Type B11**

Representative images are used for shock configuration. All measurements are in inches. Boot/Dust Shield end is upper. Rancho® only engineers its shock absorbers for the applications listed in this catalog. Misapplication of Rancho® shock absorbers will result in reduced handling and braking ability and voids warranty. Product specifications subject to change without notice.