

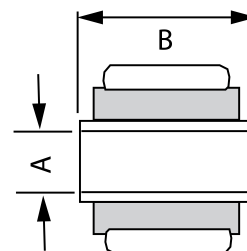
Specifications — Shock Mount Codes



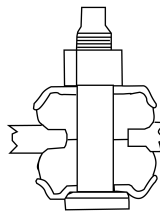
| Mount Code | Sleeve ID (A) | Sleeve OAL (B) |
|------------|---------------|----------------|
| LS1 | 10MM | 15/16" |
| LS2 | 10MM | 1" |
| LS3 | 10MM | 1 1/4" |
| LS4 | 10MM | 1 3/8" |
| LS5 | 10MM | 1 7/16" |
| LS6 | 10MM | 1 9/16" |
| LS7 | 10MM | 1 5/8" |
| LS8 | 10MM | 2" |
| LS9 | 10MM | 2 1/8" |
| LS10 | 10MM | 2 3/8" |
| LS11 | 10MM | 3" |
| LS12 | 7/16" | 1 1/4" |
| LS13 | 7/16" | 1 5/16" |
| LS14 | 7/16" | 1 3/8" |
| LS15 | 7/16" | 1 7/16" |
| LS16 | 7/16" | 1 5/8" |
| LS17 | 7/16" | 1 7/8" |
| LS18 | 7/16" | 2 1/8" |
| LS19 | 7/16" | 3 3/16" |
| LS20 | 7/16" | 3 3/8" |
| LS21 | 12MM | 1" |
| LS22 | 12MM | 1 1/8" |
| LS23 | 12MM | 1 1/4" |
| LS24 | 12MM | 1 3/8" |
| LS25 | 12MM | 1 7/16" |
| LS26 | 12MM | 1 1/2" |
| LS27 | 12MM | 1 9/16" |
| LS28 | 12MM | 1 5/8" |
| LS29 | 12MM | 1 3/4" |
| LS30 | 12MM | 1 7/8" |
| LS31 | 12MM | 2" |
| LS32 | 12MM | 2 1/8" |
| LS33 | 12MM | 2 5/16" |
| LS34 | 12MM | 2 7/8" |
| LS35 | 1/2" | 1 1/4" |
| LS36 | 1/2" | 1 5/16" |
| LS37 | 1/2" | 1 3/8" |
| LS38 | 1/2" | 1 1/2" |
| LS39 | 1/2" | 1 5/8" |
| LS40 | 1/2" | 1 11/16" |
| LS41 | 1/2" | 2 1/4" |
| LS42 | 14MM | 1 5/16" |
| LS43 | 14MM | 1 9/16" |
| LS44 | 14MM | 1 7/8" |
| LS45 | 14MM | 2 7/16" |
| LS46 | 14MM | 3 1/8" |
| LS47 | 9/16" | 1 5/8" |
| LS48 | 9/16" | 2 7/16" |

| Mount Code | Sleeve ID (A) | Sleeve OAL (B) |
|------------|---------------|----------------|
| LS49 | 5/8"-16MM | 1 3/16" |
| LS50 | 5/8"-16MM | 1 1/2" |
| LS51 | 5/8"-16MM | 1 9/16" |
| LS52 | 5/8"-16MM | 1 11/16" |
| LS53 | 5/8"-16MM | 2" |
| LS54 | 3/4" | 1 3/4" |
| LS55 | 18MM | 1 5/8" |
| LS56 | 20MM | 1 9/16" |
| LS57 | 20MM | 2" |
| LS58 | 20MM | 2 7/16" |
| LS59 | 3/4" | 3 3/16" |
| LS60 | 3/4" | 3 3/8" |
| LS61 | 5/8"-16MM | 4" |
| LS62 | 5/8"-16MM | 2 9/16" |
| LS63 | 1/2" | 1/2" |
| LS64 | 21MM | 1 5/16" |
| LS65 | 1" | 2" |
| LS66 | 3/4" | 1 3/8" |
| LS67 | 3/4" | 1 11/16" |
| LS68 | 3/4" | 1 7/8" |
| LS69 | 3/4" | 1 5/16" |
| LS70 | 3/4" | 2 1/4" |
| LS71 | 3/4" | 2 3/4" |
| LS72 | 7/16" | 2" |
| LS73 | 7/16" | 2 1/2" |
| LS74 | 12MM | 1 11/16" |
| LS75 | 20MM | 1 3/4" |
| LS76 | 1/2" | 2 3/8" |
| LS77 | 1/2" | 2 7/16" |
| LS78 | 9/16" | 1 1/2" |
| LS79 | 5/8"-16MM | 1 3/8" |
| LS80 | 5/8"-16MM | 1 3/4" |
| LS81 | 5/8"-16MM | 1 7/8" |
| LS82 | 5/8"-16MM | 1 1/2" |
| LS83 | 18MM | 2" |
| LS84 | 12MM | 2 3/8" |
| LS85 | 5/8"-16MM | 1 3/16" |
| LS86 | 3/4" | 2 5/16" |
| LS87 | 5/8"-16MM | 3 9/16" |
| LS88 | 14MM | 2 7/16" |
| LS89 | 1" | 1 3/4" |
| LS90 | 14MM | 2 5/8" |
| LS91 | 14MM | 1 3/4" |
| LS92 | 14MM | 1 11/16" |
| LS93 | 18MM | 3 1/4" |
| LS94 | 5/8"-16MM | 2 3/4" |
| LS95 | 20MM | 2 3/8" |
| LS96 | 1/2" | 1 7/8" |

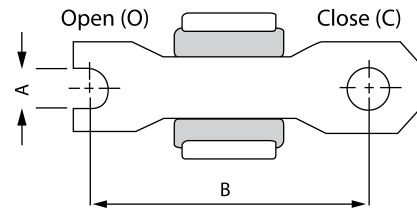
| Mount Code | Sleeve ID (A) | Sleeve OAL (B) |
|------------|---------------|----------------|
| LS97 | 1/2" | 2 3/4" |
| LS98 | 5/8"-16MM | 3" |
| LS99 | 5/8"-16MM | 3 1/4" |
| LS100 | 1 1/8" | 4" |
| LS101 | 1 1/8" | 2 5/8" |
| LS102 | 7/8" | 2 1/4" |
| LS103 | 1/2" | 3 3/4" |
| LB1 | 1/2" | 3/4" |



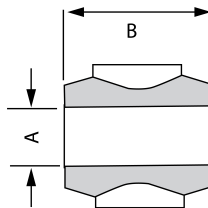
| Stem Mount Code | Sleeve Length | Thread Pitch |
|-----------------|----------------------------------|--------------|
| S1 | 1 ³ / ₁₆ " | M10 |
| S12 | 1 ³ / ₁₆ " | M10 |
| S15 | 2 ⁵ / ₈ " | M10 |
| S2 | 2" | M12 |
| S3 | 2" | 3/8"-24 |
| S33 | 2" | 3/8"-24 |
| S34 | 2 ¹ / ₄ " | 3/8"-24 |
| S4 | 2 ³ / ₈ " | 3/8"-16 |
| S42 | 2 ³ / ₈ " | 3/8"-16 |
| S5 | 2 ⁵ / ₈ " | 1/2"-13 |
| S51 | 2 ⁵ / ₈ " | 1/2"-13 |
| S52 | 2 ⁵ / ₈ " | 1/2"-20 |
| S6 | 3 ⁵ / ₁₆ " | 5/8"-11 |
| S61 | 3 ⁵ / ₁₆ " | 5/8"-11 |
| S62 | 2 ¹ / ₂ " | 5/8"-18 |
| S7 | 1 ¹ / ₈ " | M8 |



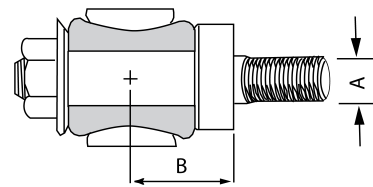
| Cross Pin Mount Code | X.Pin End Type | X.Pin Hole Diameter | X.Pin Length (Cntr to Cntr) |
|----------------------|----------------|---------------------|-----------------------------------|
| XP1 | Open | 5/16" | 2 ³ / ₁₆ " |
| XP2 | Open | 5/16" | 2 ³ / ₈ " |
| XP3 | Open | 5/16" | 2 ⁷ / ₁₆ " |
| XP4 | Closed | 5/16" | 2 ⁷ / ₁₆ " |
| XP5 | Closed | 5/16" | 2 ¹ / ₂ " |
| XP6 | Open | 5/16" | 2 ³ / ₄ " |
| XP7 | Closed | 5/16" | 2 ⁷ / ₈ " |
| XP8 | Open | 5/16" | 3" |
| XP9 | Open | 5/16" | 3 ⁵ / ₈ " |
| XP10 | Open | 3/8" | 2 ⁵ / ₈ " |
| XP11 | Closed | 3/8" | 2 ³ / ₄ " |
| XP12 | Open | 3/8" | 3 ³ / ₁₆ " |
| XP13 | Closed | 12MM | 2 ¹⁵ / ₁₆ " |
| XP14 | Closed | 1/2" | 3 ³ / ₈ " |
| XP15 | Closed | 1/2" | 3 ³ / ₄ " |
| XP16 | Closed | 3/8" | 4" |



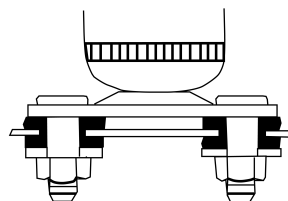
| Loop Mount Code | Bushing ID (A) | Bushing OAL (B) |
|-----------------|---------------------------------|----------------------------------|
| L1 | 5/8" | 1 ⁵ / ₁₆ " |
| L2 | 11/16" | 1 ⁹ / ₁₆ " |
| L3 | 3/4" | 1 ⁹ / ₁₆ " |
| L4 | 1" | 1 ³ / ₄ " |
| L5 | 1 ¹ / ₄ " | 2 ⁹ / ₁₆ " |
| L6 | 1 ¹ / ₂ " | 3 ¹ / ₄ " |



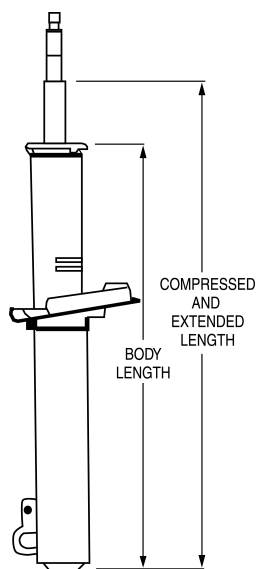
| Cantilever Mount Code | Stud Diameter (A) | Stud Length (B) |
|-----------------------|-------------------|----------------------------------|
| CP1 | 1/2" | 1 ¹ / ₁₆ " |
| CP2 | 1/2" | 1 ³ / ₁₆ " |
| CP3 | 1/2" | 1 ⁵ / ₁₆ " |
| CP4 | 1/2" | 1 ¹ / ₂ " |
| CP5 | 5/8" | 1 ⁵ / ₁₆ " |
| CP5 | 5/8" | 1 ⁵ / ₁₆ " |



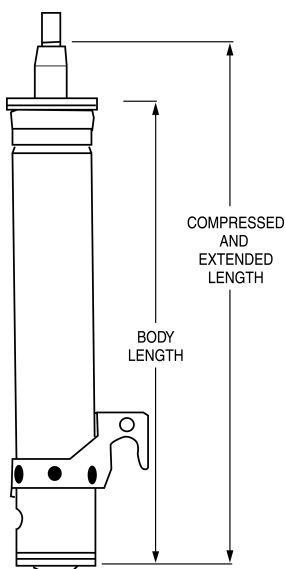
| Special Mount | Mount Description |
|---------------|----------------------|
| CLEV | Clevis Bracket Mount |
| SPEC | Special Mount |
| SP | Stud Plate Mount |



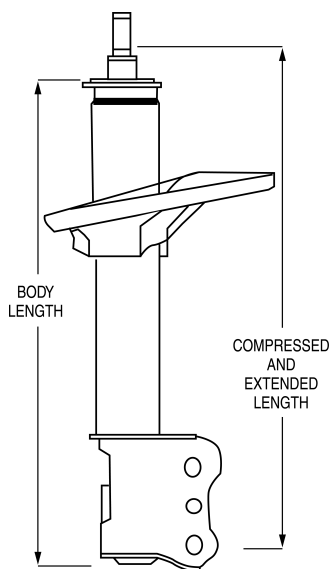
MOUNTING & LENGTH CHARTS REPLACEMENT UNITS MONTAGE ET LONGUEUR DES UNITÉS DE REMPLACEMENT TABLAS DE MONTAJE Y LONGITUD DE LAS UNIDADES DE REPUESTO



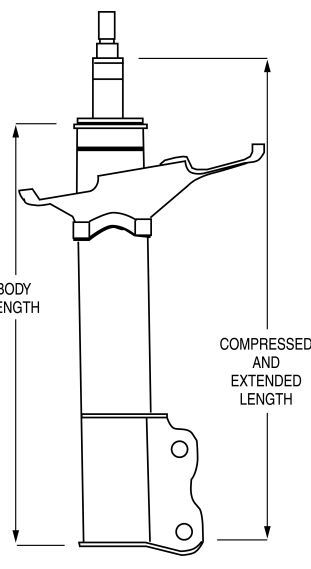
B4



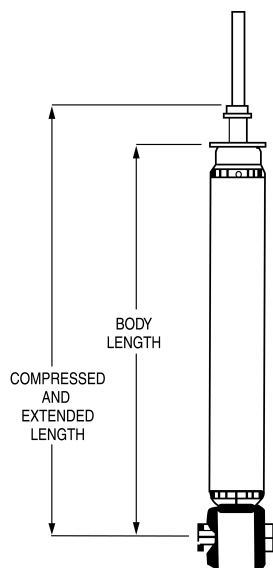
B8



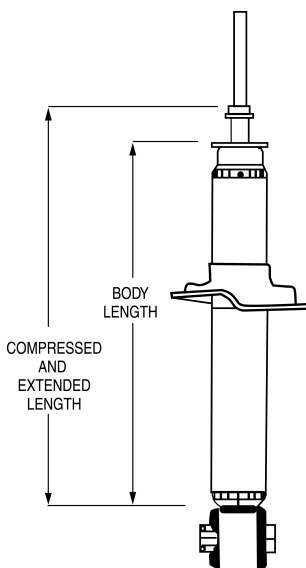
B10



B11

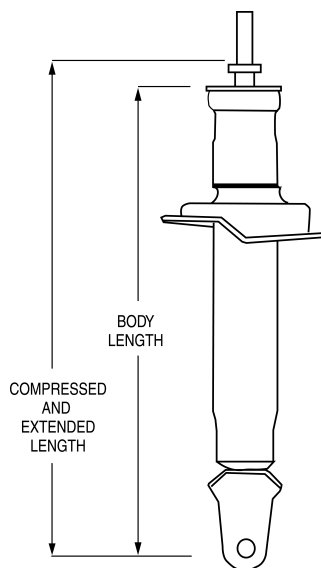


SS1



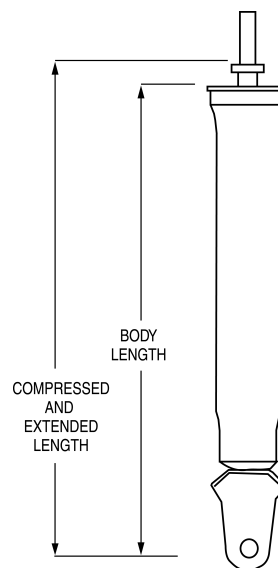
SS2

**SS3 w/Dirt Shield Not
Shown**



SS4

**SS5 w/Dirt Shield Not
Shown**



SS6

BODY LENGTH / LONGUEUR DU CORP / LONGITUD DEL CUERPO.

COMPRESSED AND EXTENDED LENGTH / LONGUEUR COMPRIMÉE ET ÉTENDUE / LONGITUD COMPRIMIDA Y EXTENDIDA.

NOTE/NOTA:

All Piston Rod Ends are Designed Special For Each Application.

Chaque extrémité de tige de piston est conçue spécialement pour chaque application.

Todos los extremos de la varas del pistón están diseñadas especialmente para cada aplicación.



Specifications — Shock Absorbers

All listed specifications are for convenience only and are subject to change without notice. Specifications are not intended for design of custom applications.

NOTE: Internal extension bumper may reduce perceived extended length by ½". Extended and collapsed length dimensions shown for RS5000 shocks, others may vary slightly.

| PART NO. | MOUNTING CODES | | LENGTHS | | | PARTS PACK(S) |
|--------------------------------|----------------|-------|---------|----------|--------|------------------------|
| | UPPER | LOWER | COMP. | EXTENDED | TRAVEL | |
| RANCHO® RS5000 SHOCK ABSORBERS | | | | | | |
| RS5056 | LS92 | LS92 | 18.84 | 31.97 | 13.13 | None |
| RS5152 | LS77 | LS40 | 12.14 | 17.9 | 5.76 | None |
| RS5197 | S51 | LS47 | 13.78 | 22.03 | 8.25 | P01167 |
| RS5199 | S4 | XP8 | 8.98 | 13.45 | 4.47 | P01135 |
| RS5202 | L3 | L3 | 14.83 | 23.71 | 8.88 | P00888 |
| RS5238 | S4 | LS26 | 16.56 | 28.49 | 11.93 | P01136 |
| RS5267 | L1 | LS38 | 14.4 | 22.87 | 8.47 | None |
| RS5285 | LS39 | LS39 | 15.39 | 24.89 | 9.5 | None |
| RS5287 | LS39 | LS39 | 18.58 | 30.56 | 11.98 | None |
| RS5295 | S5 | LS42 | 10.44 | 15.2 | 4.76 | P01167 |
| RS5299 | XP7 | LS47 | 13.74 | 20.98 | 7.24 | None |
| RS5329 | S5 | LS38 | 15.52 | 24.99 | 9.47 | P01167 |
| RS5368 | S5 | XP14 | 9.56 | 13.91 | 4.35 | P01167 |
| RS5384 | LS38 | LS38 | 18.46 | 28.58 | 10.12 | None |
| RANCHO® RS5000X SHOCK ABSORBER | | | | | | |
| RS55001 | LS24 | LS24 | 13.39 | 21.08 | 7.69 | P00816 |
| RS55005 | LS39 | L2 | 17.24 | 29.01 | 11.77 | None |
| RS55006 | L1 | L1 | 11.74 | 18.02 | 6.28 | P00915 |
| RS55007 | L1 | LS26 | 14.89 | 24.29 | 9.41 | None |
| RS55008 | L1 | L1 | 13.76 | 22.04 | 8.28 | P00915, P01057 |
| RS55009 | S4 | LS38 | 15.75 | 26.32 | 10.57 | P01134 |
| RS55010 | LS21 | LS21 | 16.01 | 26.89 | 10.88 | P00915, P01057, P00920 |
| RS55012 | L1 | L1 | 19.01 | 32.54 | 13.53 | P00915, P00934 |
| RS55014 | S4 | S4 | 14.67 | 24.82 | 10.15 | (2) P01134 |
| RS55017 | S4 | LS38 | 15.12 | 25.28 | 10.16 | P01135 |
| RS55023 | LS47 | LS47 | 14.97 | 22.56 | 7.59 | None |
| RS55024 | LS26 | LS26 | 15.84 | 24.62 | 8.78 | None |
| RS55029 | S4 | LS26 | 9.75 | 14.32 | 4.57 | P01135 |
| RS55034 | L1 | L1 | 20.01 | 34.04 | 14.03 | P00915, P01013 |
| RS55036 | L1 | L1 | 21.01 | 36.04 | 15.03 | P00915, P01013 |
| RS55036A | L1 | LS78 | 21.06 | 36.09 | 15.03 | None |
| RS55039 | S42 | L1 | 9.67 | 14.32 | 4.65 | P01134, P01013 |
| RS55040 | S15 | LS35 | 13.75 | 22.84 | 9.09 | P01134 |
| RS55041 | S4 | LS23 | 13.25 | 21.41 | 8.16 | P01134 |
| RS55042 | S5 | LS92 | 13.85 | 20.79 | 6.94 | P01167 |
| RS55043 | S5 | LS92 | 14.97 | 23.37 | 8.4 | P01167 |
| RS55044 | S5 | LS92 | 15.72 | 24.86 | 9.14 | P01167 |
| RS55045 | L1 | LS26 | 19.76 | 33.79 | 14.03 | None |
| RS55046 | L1 | LS26 | 16.39 | 27.17 | 10.78 | none |
| RS55046A | L1 | LS78 | 16.41 | 27.41 | 10.78 | None |
| RS55047 | L1 | LS26 | 18.51 | 31.46 | 12.95 | None |
| RS55047A | L1 | LS78 | 18.58 | 31.24 | 12.66 | None |
| RS55048 | S5 | LS92 | 16.6 | 26.73 | 10.13 | P01167 |
| RS55054 | LS47 | LS42 | 15.04 | 23.45 | 8.41 | None |
| RS55056 | LS92 | LS92 | 18.69 | 31.97 | 13.28 | None |
| RS55063 | LS97 | LS38 | 15.96 | 21.96 | 6 | None |
| RS55064 | LS97 | LS38 | 17.24 | 24.41 | 7.17 | None |
| RS55065 | LS97 | LS38 | 17.52 | 25.21 | 7.69 | None |
| RS55066 | LS97 | LS38 | 19.41 | 28.59 | 9.19 | None |
| RS55067 | LS97 | LS38 | 18.49 | 27.14 | 8.65 | None |
| RS55068 | LS97 | LS38 | 19.96 | 29.74 | 9.78 | None |

Rancho® only engineers its shock absorbers for the applications listed in this catalog. Misapplication of Rancho® shock absorbers will result in reduced handling and braking ability and voids warranty. Product Specifications Subject To Change Without Notice.

Specifications — Shock Absorbers



All listed specifications are for convenience only and are subject to change without notice. Specifications are not intended for design of custom applications.

NOTE: Internal extension bumper may reduce perceived extended length by ½". Extended and collapsed length dimensions shown for RS5000 shocks, others may vary slightly.

| PART NO. | MOUNTING CODES | | LENGTHS | | | PARTS PACK(S) |
|--|----------------|-------|---------|----------|--------|------------------------|
| | UPPER | LOWER | COMP. | EXTENDED | TRAVEL | |
| RANCHO® RS5000X SHOCK ABSORBER (Cont.) | | | | | | |
| RS55069 | LS43 | LS43 | 17.63 | 24.05 | 6.42 | None |
| RS55070 | LS43 | LS43 | 19.84 | 28.22 | 8.38 | None |
| RS55072 | S5 | LS47 | 15.87 | 24.76 | 8.89 | P01167 |
| RS55100 | LS47 | LS47 | 15.69 | 25.21 | 9.53 | None |
| RS55111 | L2 | L2 | 12.86 | 20.26 | 7.4 | None |
| RS55112 | L1 | L1 | 16.01 | 26.42 | 10.41 | P00913, P00915 |
| RS55113 | L1 | L1 | 12.89 | 20.29 | 7.4 | P00916 |
| RS55114 | L2 | L2 | 15.11 | 24.64 | 9.53 | P00939 |
| RS55115 | S4 | L1 | 12.87 | 20.66 | 7.79 | P00916 |
| RS55116 | L1 | L1 | 14.86 | 24.05 | 9.19 | P00916 |
| RS55117 | S4 | L1 | 11.87 | 18.7 | 6.83 | P01134, P00910 |
| RS55118 | L1 | L1 | 14.01 | 22.29 | 8.28 | P00912, P00915, P01013 |
| RS55119 | L1 | L1 | 11.64 | 18.04 | 6.4 | P00916, P00925 |
| RS55120 | L1 | LS36 | 9.86 | 14.14 | 4.28 | P00915, P00916 |
| RS55123 | LS39 | LS39 | 11.89 | 18.08 | 6.19 | None |
| RS55124 | XP4 | LS40 | 14.07 | 24.21 | 10.14 | |
| RS55125 | L1 | LS26 | 14.11 | 22.26 | 8.15 | None |
| RS55126 | L1 | LS26 | 16.01 | 26.42 | 10.41 | None |
| RS55128 | S4 | XP5 | 13.05 | 21.03 | 7.98 | P01136 |
| RS55129 | XP12 | L1 | 12.76 | 20.04 | 7.28 | None |
| RS55132 | L1 | L1 | 16.11 | 26.39 | 10.28 | P00911 (2) |
| RS55134 | L1 | L1 | 19.11 | 32.77 | 13.66 | P00915, P00934 |
| RS55136 | S4 | L1 | 11.25 | 17.44 | 6.19 | P01134, P00910 |
| RS55143 | L3 | L3 | 15.56 | 25.22 | 9.66 | None |
| RS55144 | L3 | L3 | 14.19 | 22.34 | 8.15 | None |
| RS55145 | S4 | LS50 | 9.25 | 13.45 | 4.2 | P01134 |
| RS55147 | LS40 | LS40 | 14.56 | 23.82 | 9.26 | |
| RS55149 | LS27 | LS27 | 16.81 | 27.84 | 11.03 | None |
| RS55150 | LS77 | LS40 | 11.51 | 16.79 | 5.28 | None |
| RS55151 | LS37 | LS37 | 12.26 | 19.48 | 7.22 | P00816 |
| RS55152 | LS77 | LS40 | 12.01 | 17.96 | 5.95 | None |
| RS55157 | LS54 | S5 | 13.67 | 22.08 | 8.41 | P01167 |
| RS55158 | S4 | L3 | 13.06 | 20.96 | 7.91 | P01134 |
| RS55159 | S4 | S4 | 12.79 | 21.07 | 8.28 | (2) P01136 |
| RS55165 | LS26 | LS26 | 14.01 | 22.42 | 8.41 | None |
| RS55166 | S4 | XP5 | 9.45 | 13.83 | 4.38 | P01134 |
| RS55168 | S4 | LS38 | 15.13 | 25.28 | 10.15 | P01135 |
| RS55179 | S4 | L1 | 13.76 | 22.28 | 8.52 | P01135, P00920 |
| RS55180 | L3 | L3 | 13.69 | 21.47 | 7.78 | None |
| RS55185 | XP7 | LS26 | 15.51 | 25.42 | 9.91 | P0941 |
| RS55187 | S4 | L3 | 12.34 | 19.81 | 7.47 | P01134 |
| RS55188 | S4 | LS23 | 8.87 | 12.7 | 3.83 | P01134 |
| RS55190 | XP7 | LS92 | 16.08 | 26.36 | 10.28 | None |
| RS55194 | L1 | LS25 | 14.41 | 22.31 | 7.9 | None |
| RS55195 | S51 | LS47 | 9.57 | 13.82 | 4.25 | P01167 |
| RS55197 | S51 | LS47 | 13.66 | 22.06 | 8.4 | P01167 |
| RS55198 | LS47 | LS47 | 15.69 | 25.59 | 9.9 | None |
| RS55199 | S5 | XP8 | 9.25 | 13.44 | 4.2 | P01135 |
| RS55207 | S5 | S5 | 14.29 | 23.32 | 9.03 | (2) P01167 |
| RS55208 | S5 | L3 | 14.04 | 22.7 | 8.66 | P01167 |
| RS55214 | S4 | LS23 | 9.67 | 14.32 | 4.65 | P01134 |
| RS55215 | LS78 | L3 | 12.78 | 19.81 | 7.03 | None |

Rancho® only engineers its shock absorbers for the applications listed in this catalog. Misapplication of Rancho® shock absorbers will result in reduced handling and braking ability and voids warranty. Product Specifications Subject To Change Without Notice.



Specifications — Shock Absorbers

All listed specifications are for convenience only and are subject to change without notice. Specifications are not intended for design of custom applications.

NOTE: Internal extension bumper may reduce perceived extended length by ½". Extended and collapsed length dimensions shown for RS5000 shocks, others may vary slightly.

| PART NO. | MOUNTING CODES | | LENGTHS | | | PARTS PACK(S) |
|--|----------------|-------|---------|----------|--------|----------------|
| | UPPER | LOWER | COMP. | EXTENDED | TRAVEL | |
| RANCHO® RS5000X SHOCK ABSORBER (Cont.) | | | | | | |
| RS55221 | S5 | LS92 | 14.59 | 23.63 | 9.04 | P01167 |
| RS55222 | S42 | XP11 | 9.42 | 13.7 | 4.28 | P01134 |
| RS55226 | L3 | L3 | 13.19 | 20.34 | 7.15 | None |
| RS55227 | XP5 | LS92 | 17.33 | 29.56 | 12.24 | |
| RS55229 | S4 | XP5 | 13.72 | 18.25 | 4.53 | P01135, P00941 |
| RS55233 | S4 | LS27 | 9.84 | 14.37 | 4.53 | P01136 |
| RS55234 | S4 | LS26 | 16.13 | 27.03 | 10.9 | P01136 |
| RS55235 | S5 | XP5 | 10.24 | 15 | 4.76 | P01167 |
| RS55236 | S4 | LS26 | 14.5 | 24.03 | 9.53 | P01135 |
| RS55237 | S4 | LS39 | 11.59 | 18 | 6.41 | P01136 |
| RS55238 | S42 | LS38 | 16.88 | 29.09 | 12.21 | P01136 |
| RS55239 | S4 | XP4 | 14.43 | 23.84 | 9.41 | P01136 |
| RS55240 | XP12 | LS37 | 12.76 | 20.04 | 7.28 | None |
| RS55241 | XP12 | LS37 | 13.51 | 21.67 | 8.16 | None |
| RS55244 | LS77 | LS89 | 13.76 | 22.39 | 8.63 | |
| RS55245 | XP12 | L1 | 15.01 | 24.67 | 9.66 | None |
| RS55246 | LS26 | LS26 | 14.21 | 23 | 8.79 | None |
| RS55248 | LS28 | LS28 | 15.36 | 25.24 | 9.88 | |
| RS55251 | S4 | LS43 | 16.02 | 27.06 | 11.03 | P01135 |
| RS55254 | L1 | LS26 | 18.26 | 30.83 | 12.57 | None |
| RS55254A | L1 | LS78 | 18.32 | 30.85 | 12.53 | None |
| RS55255 | S4 | XP4 | 15.8 | 26.53 | 10.73 | P01136 |
| RS55256 | XP12 | LS37 | 15.01 | 24.67 | 9.66 | None |
| RS55259 | L1 | LS25 | 13.49 | 21.51 | 8.02 | None |
| RS55260 | LS29 | LS25 | 13.64 | 21.54 | 7.9 | None |
| RS55261 | L1 | LS26 | 19.01 | 32.98 | 13.97 | None |
| RS55262 | LS47 | LS47 | 15.08 | 23.89 | 8.81 | None |
| RS55263 | S4 | XP5 | 10 | 14.45 | 4.45 | P01134 |
| RS55264 | L1 | LS26 | 15.26 | 24.42 | 9.16 | None |
| RS55265 | S4 | CLEV | 11.02 | 15.31 | 4.29 | P01135 |
| RS55267 | L1 | LS26 | 14.26 | 22.92 | 8.66 | None |
| RS55268 | S4 | CLEV | 13.78 | 20.81 | 7.03 | P01135 |
| RS55269 | LS47 | LS47 | 16.81 | 27.59 | 10.78 | None |
| RS55272 | S5 | L1 | 10.13 | 15.04 | 4.91 | P01167 |
| RS55273 | L1 | LS26 | 16.89 | 28.08 | 11.19 | None |
| RS55274 | LS47 | LS47 | 16.19 | 26.44 | 10.25 | None |
| RS55279 | S5 | XP10 | 10.66 | 16.44 | 5.78 | P01167 |
| RS55281 | S5 | XP12 | 9.76 | 14.2 | 4.44 | P01167 |
| RS55282 | S5 | LS92 | 10.97 | 16.63 | 5.66 | P01167 |
| RS55283 | S5 | LS47 | 12.63 | 19.79 | 7.16 | P01167 |
| RS55284 | LS91 | LS28 | 13.99 | 22.58 | 8.59 | |
| RS55285 | LS39 | LS39 | 15.41 | 24.95 | 9.54 | None |
| RS55286 | LS26 | LS26 | 16.43 | 27.22 | 10.79 | None |
| RS55287 | LS26 | LS26 | 18.43 | 30.59 | 12.16 | None |
| RS55288 | S5 | LS42 | 13.04 | 15.39 | 2.35 | P01167 |
| RS55289 | S5 | LS42 | 13.88 | 21.41 | 7.53 | P01167 |
| RS55295 | S5 | LS42 | 10.26 | 15.16 | 4.9 | P01167 |
| RS55296 | S5 | LS42 | 13.5 | 21.66 | 8.16 | P01167 |
| RS55297 | LS47 | LS47 | 18.08 | 30.47 | 12.39 | None |
| RS55299 | XP7 | LS47 | 13.58 | 20.98 | 7.4 | None |
| RS55300 | S4 | LS21 | 10.17 | 15.12 | 4.95 | P01135 |
| RS55301 | LS47 | XP7 | 14.73 | 23.13 | 8.4 | None |

Rancho® only engineers its shock absorbers for the applications listed in this catalog. Misapplication of Rancho® shock absorbers will result in reduced handling and braking ability and voids warranty. Product Specifications Subject To Change Without Notice.

Specifications — Shock Absorbers



All listed specifications are for convenience only and are subject to change without notice. Specifications are not intended for design of custom applications.

NOTE: Internal extension bumper may reduce perceived extended length by ½". Extended and collapsed length dimensions shown for RS5000 shocks, others may vary slightly.

| PART NO. | MOUNTING CODES | | LENGTHS | | | PARTS PACK(S) |
|--|----------------|-------|---------|----------|--------|----------------|
| | UPPER | LOWER | COMP. | EXTENDED | TRAVEL | |
| RANCHO® RS5000X SHOCK ABSORBER (Cont.) | | | | | | |
| RS55304 | LS47 | LS47 | 16.56 | 27.34 | 10.78 | None |
| RS55308 | XP11 | LS92 | 15.18 | 23.96 | 8.78 | None |
| RS55315 | LS28 | LS28 | 14.93 | 24.13 | 9.2 | None |
| RS55316 | LS38 | LS38 | 17.56 | 29.38 | 11.82 | None |
| RS55317 | S5 | LS92 | 17.85 | 28.94 | 11.09 | P01356 |
| RS55319 | S4 | LS35 | 13.76 | 22.72 | 8.96 | P01134 |
| RS55324 | S5 | LS38 | 14.73 | 24.38 | 9.65 | P01167 |
| RS55325 | XP7 | LS92 | 14.96 | 24.11 | 9.15 | None |
| RS55326 | S51 | LS38 | 13.85 | 21.75 | 7.9 | P01167 |
| RS55328 | XP12 | LS38 | 14.46 | 22.61 | 8.15 | None |
| RS55329 | S5 | LS38 | 15.35 | 25.01 | 9.66 | P01167 |
| RS55330 | XP12 | LS38 | 15.96 | 25.75 | 9.79 | None |
| RS55331 | S5 | LS38 | 15.97 | 27.26 | 11.29 | P01167 |
| RS55332 | XP12 | LS38 | 16.96 | 28.25 | 11.29 | None |
| RS55367 | LS47 | LS47 | 16.31 | 25.63 | 9.32 | None |
| RS55368 | S5 | XP14 | 9.65 | 13.93 | 4.28 | P01167 |
| RS55369 | LS47 | LS47 | 17.31 | 28.17 | 10.86 | None |
| RS55370 | S5 | LS42 | 10.75 | 16.27 | 5.52 | P01167 |
| RS55371 | S4 | CLEV | 11.28 | 16.31 | 5.03 | P01135 |
| RS55372 | S4 | LS38 | 10.25 | 15.41 | 5.16 | P01135 |
| RS55373 | S5 | LS92 | 11.35 | 17.42 | 6.07 | P01167 |
| RS55374 | S4 | XP5 | 13.97 | 19.25 | 5.28 | P01135, P00941 |
| RS55375 | S42 | LS38 | 10.28 | 16.12 | 5.84 | P01135 |
| RS55376 | S5 | CLEV | 13.58 | 16.2 | 2.62 | P01167 |
| RS55377 | XP15 | CLEV | 13.67 | 17.97 | 4.3 | P01299 |
| RS55378 | XP15 | CLEV | 14.67 | 18.98 | 4.31 | P01299 |
| RS55379 | LS47 | LS47 | 16 | 25.28 | 9.28 | None |
| RS55380 | XP15 | CLEV | 16.69 | 22.97 | 6.28 | P01299 |
| RS55381 | LS47 | LS47 | 17.87 | 29.63 | 11.76 | None |
| RS55382 | SP | CLEV | 18.3 | 24.58 | 6.28 | P01299 |
| RS55383 | LS47 | LS47 | 19.25 | 31.16 | 11.91 | None |
| RS55384 | LS27 | LS27 | 18.3 | 29.15 | 10.85 | |
| RS55385 | XP7 | LS38 | 16.77 | 28.17 | 11.4 | None |
| RS55386 | LS40 | LS63 | 14.56 | 23.09 | 8.53 | None |
| RS55387 | LS40 | LS77 | 14.56 | 23.21 | 8.66 | None |
| RS55388 | LS29 | LS23 | 10.85 | 15.75 | 4.9 | None |
| RS55389 | LS30 | LS28 | 14.87 | 23.78 | 8.91 | None |
| RS55391 | LS74 | LS52 | 15.12 | 24.28 | 9.16 | None |
| RS55392 | S4 | LS23 | 8.53 | 11.94 | 3.41 | P01135 |
| RS55393 | L1 | L1 | 14.12 | 22.65 | 8.53 | None |
| RS55394 | LS47 | LS44 | 15.06 | 24.25 | 9.19 | None |
| RS55395 | LS52 | LS81 | 14.43 | 22.96 | 8.53 | None |
| RS55396 | LS44 | LS44 | 11.77 | 17.56 | 5.79 | None |
| RS55397 | S5 | LS68 | 14.04 | 22.11 | 8.07 | P01167 |
| RS55398 | LS29 | LS38 | 15.17 | 24.44 | 9.27 | None |
| RS55399 | S2 | CLEV | 16.05 | 23.36 | 7.31 | P00762 |
| RS55601 | L1 | L1 | 12.62 | 19.82 | 7.2 | None |
| RS55602 | S4 | XP12 | 9.15 | 13.48 | 4.32 | P01134 |
| RS55605 | S4 | LS23 | 9 | 13.84 | 4.84 | P01134 |
| RS55609 | S5 | XP1 | 9.72 | 14.94 | 5.22 | P01134 |
| RS55610 | S4 | LS21 | 11.6 | 18.34 | 6.74 | P01134 |

Rancho® only engineers its shock absorbers for the applications listed in this catalog. Misapplication of Rancho® shock absorbers will result in reduced handling and braking ability and voids warranty. Product Specifications Subject To Change Without Notice.



Specifications — Shock Absorbers

All listed specifications are for convenience only and are subject to change without notice. Specifications are not intended for design of custom applications.

NOTE: Internal extension bumper may reduce perceived extended length by ½". Extended and collapsed length dimensions shown for RS5000 shocks, others may vary slightly.

| PART NO. | MOUNTING CODES | | LENGTHS | | | PARTS PACK(S) |
|----------------------------------|----------------|-------|---------|----------|----------|------------------------|
| | UPPER | LOWER | COMP. | EXTENDED | TRAVEL | |
| RANCHO® RS5000 STEERING DAMPERS | | | | | | |
| RS5401 | L1 | L1 | 12.27 | 19.45 | 7.18 | P00920, P00837, P00829 |
| RS5402 | S4 | S4 | 12.23 | 20.25 | 8.02 | P01134 |
| RS5403 | S4 | S4 | 13.22 | 22.25 | 9.03 | P01134 |
| RS5404 | L1 | L1 | 14.52 | 23.96 | 9.44 | P01619, P00932, P00837 |
| RS5405 | S4 | L1 | 12.82 | 21.74 | 8.92 | P01134, P00932 |
| RS5406 | L1 | L1 | 17.77 | 30.37 | 12.6 | None |
| RS5407 | L1 | LS37 | 11.91 | 19.47 | 7.56 | P00837, P00953 |
| RS5409 | LS5 | LS24 | 12.78 | 20.71 | 7.93 | P01326 |
| RS5410 | L1 | LS38 | 14.42 | 24.34 | 9.92 | P01730, P00847 |
| RS5411 | L1 | LS35 | 12.53 | 20.64 | 8.11 | P01368 |
| RS5412 | L1 | LS24 | 14.15 | 23.36 | 9.21 | P01368 |
| RS5413 | S4 | L1 | 15.7 | 27.48 | 11.78 | P01135, P01385 |
| RS5415 | LS26 | L1 | 16.16 | 27.94 | 11.78 | P01385 |
| RS5416 | LS37 | LS24 | 14.15 | 23.36 | 9.21 | None |
| RS5417 | L1 | LS35 | 13.66 | 22.96 | 9.3 | P01368 |
| RS5418 | LS24 | LS24 | 13.15 | 20.7 | 7.55 | None |
| RS5419 | L1 | LS38 | 14.56 | 24.29 | 9.73 | P01730, P00847 |
| RS5420 | LS24 | LS38 | 13.24 | 20.95 | 7.71 | None |
| RS5421 | LS26 | L1 | 16.43 | 28.15 | 11.72 | P01385 |
| RANCHO® RS7000MT SHOCK ABSORBERS | | | | | | |
| RS7023 | LS40 | LS40 | 14.91 | 22.52 | 7.61 | None |
| RS7062 | XP12 | LS37 | 15.77 | 24.933 | 9.18 | None |
| RS7113 | L1 | L1 | 13.42 | 20.73 | 7.31 | P00916 |
| RS7118 | L1 | L1 | 14.26 | 22.311 | 8.01 | P00912, P00915, P01013 |
| RS7239 | S42 | XP5 | 15.04 | 23.97 | 8.93 | P01136 |
| RS7255 | S4 | XP5 | 15.78 | 25.41 | 9.63 | P01136 |
| RS7256 | XP12 | LS37 | 15.58 | 24.86 | 9.28 | None |
| RS7267 | L1 | LS26 | 14.65 | 23.13 | 8.49 | None |
| RS7329 | S5 | LS27 | 15.82 | 25 | 9.18 | P01167 |
| RS7331 | S51 | LS38 | 16.5 | 26.76 | 10.26 | P01167 |
| RS7371 | S4 | CLEV | 11.56 | 16.48 | 4.92 | P01135 |
| RS7377 | XP15 | CLEV | 13.64 | 17.96 | 4.32 | P01617 |
| RS7379 | LS92 | LS92 | 16.31 | 25.88 | 0.376771 | None |
| RANCHO® RS7MT SHOCK ABSORBERS | | | | | | |
| RS77023 | LS47 | LS47 | 15.04 | 22.36 | 7.56 | None |
| RS77042 | S5 | LS92 | 13.86 | 20.47 | 6.61 | P01167 |
| RS77043 | S5 | LS92 | 15.24 | 22.8 | 7.56 | P01167 |
| RS77044 | S51 | LS92 | 15.63 | 24.17 | 8.54 | P01167 |
| RS77047A | L1 | LS78 | 19.92 | 31.34 | 11.42 | None |
| RS77055 | S51 | LS42 | 15.47 | 23.3 | 7.83 | P01167 |
| RS77056 | LS47 | LS47 | 20.16 | 31.61 | 11.45 | None |
| RS77063 | LS97 | LS38 | 16.02 | 23.46 | 7.44 | None |
| RS77064 | LS97 | LS38 | 17.2 | 25.91 | 8.71 | None |
| RS77065 | LS97 | LS38 | 17.43 | 26.66 | 9.23 | None |
| RS77066 | LS97 | LS38 | 19.37 | 30.04 | 10.67 | None |
| RS77067 | LS97 | LS38 | 18.39 | 28.59 | 10.2 | None |
| RS77068 | LS97 | LS38 | 19.79 | 31.19 | 11.4 | None |
| RS77069 | LS43 | LS43 | 17.55 | 25.55 | 8 | None |
| RS77070 | LS43 | LS43 | 18.14 | 27.24 | 9.1 | None |
| RS77112 | L1 | L1 | 16.65 | 25.7 | 9.05 | P00913, P00915 |
| RS77113 | L1 | L1 | 13.9 | 20.59 | 6.69 | P00916 |

Rancho® only engineers its shock absorbers for the applications listed in this catalog. Misapplication of Rancho® shock absorbers will result in reduced handling and braking ability and voids warranty. Product Specifications Subject To Change Without Notice.

Specifications — Shock Absorbers



All listed specifications are for convenience only and are subject to change without notice. Specifications are not intended for design of custom applications.

NOTE: Internal extension bumper may reduce perceived extended length by ½". Extended and collapsed length dimensions shown for RS5000 shocks, others may vary slightly.

| PART NO. | MOUNTING CODES | | LENGTHS | | | PARTS PACK(S) |
|---------------------------------------|----------------|-------|---------|----------|--------|------------------------------|
| | UPPER | LOWER | COMP. | EXTENDED | TRAVEL | |
| RANCHO® RS7MT SHOCK ABSORBERS (Cont.) | | | | | | |
| RS77118 | L1 | L1 | 14.69 | 22.17 | | P00912, P00915, P01013 |
| RS77119 | L1 | L1 | 12.52 | 18.11 | 5.59 | P00916 |
| RS77149 | LS27 | LS27 | 18 | 27.91 | 9.91 | None |
| RS77150 | LS77 | LS39 | 11.54 | 16.46 | 4.92 | None |
| RS77152 | LS77 | LS39 | 12.52 | 17.95 | 5.43 | None |
| RS77197 | S5 | LS47 | 14.53 | 22.13 | 7.6 | P01167 |
| RS77198 | LS92 | LS92 | 16.43 | 25.2 | 8.77 | No |
| RS77254 | L1 | LS26 | 18.82 | 29.6 | 10.78 | None |
| RS77261 | L1 | LS26 | 20.39 | 32.24 | 11.85 | None |
| RS77262 | LS47 | LS47 | 15.83 | 23.78 | 7.95 | None |
| RS77264 | L1 | LS26 | 16.06 | 24.4 | 8.34 | None |
| RS77267 | L1 | LS26 | 15.08 | 23 | 7.92 | None |
| RS77268 | S4 | Clev | 14.21 | 20.71 | 6.5 | P01135 |
| RS77269 | LS47 | LS47 | 17.6 | 27.2 | 9.6 | None |
| RS77272 | S5 | L1 | 10.79 | 15.16 | 4.37 | P01167 |
| RS77274 | LS47 | LS47 | 16.81 | 25.87 | 9.06 | None |
| RS77305 | S51 | LS68 | 14.6 | 22.32 | 7.72 | P01167 |
| RS77316 | LS38 | LS38 | 18.78 | 29.45 | 10.67 | None |
| RS77319 | S4 | LS35 | 14.61 | 22.44 | 7.83 | P01134 |
| RS77324 | S5 | LS38 | 16.02 | 24.6 | 8.58 | P01167 |
| RS77326 | S5 | LS38 | 15.24 | 23.43 | 8.19 | P01167 |
| RS77328 | XP12 | LS38 | 15.62 | 23.87 | 8.25 | None |
| RS77330 | XP12 | LS38 | 17.52 | 27.04 | 9.5 | No |
| RS77331 | S5 | LS38 | 17.01 | 26.61 | 9.6 | P01167 |
| RS77367 | LS47 | LS47 | 16.61 | 25.51 | 8.9 | None |
| RS77370 | S51 | LS42 | 11.57 | 16.46 | 4.98 | P01167 |
| RS77371 | S4 | CLEV | 11.65 | 16.34 | 4.69 | P01135 |
| RS77377 | XP15 | Clev | 13.7 | 17.8 | 4.41 | P01617 |
| RS77378 | XP15 | Clev | 14.69 | 18.82 | 4.13 | P01299 |
| RS77379 | LS47 | LS47 | 16.77 | 25.83 | 9.06 | None |
| RS77380 | XP15 | Clev | 16.65 | 22.83 | 6.18 | P01299 |
| RS77381 | LS47 | LS47 | 18.74 | 29.17 | 10.43 | None |
| RS77384 | LS27 | LS27 | 18.58 | 28.7 | 10.12 | None |
| RANCHO® RS7000MT STEERING DAMPERS | | | | | | |
| RS7411 | L1 | LS35 | 12.71 | 20.54 | 7.83 | P01368 |
| RANCHO® RS7MT STEERING DAMPERS | | | | | | |
| RS77401 | L1 | L1 | 12.72 | 19.29 | 6.57 | 17111238, 17111239, 17111240 |
| RS77405 | S4 | L1 | 13.62 | 21.5 | 7.88 | 17111242, 17111243 |
| RS77407 | L1 | LS37 | 12.72 | 19.29 | 6.57 | 17111239, 17111241 |
| RS77412 | L1 | LS24 | 14.88 | 23.31 | 8.43 | 1711124 |
| RS77416 | LS37 | LS24 | 14.88 | 23.3 | 8.42 | None |
| RS77418 | LS24 | LS24 | 13.5 | 20.63 | 7.13 | None |
| RS77420 | LS24 | LS38 | 13.5 | 20.91 | 7.41 | None |
| RANCHO® RS9000XL SHOCK ABSORBERS | | | | | | |
| RS999001 | L1 | L1 | 13.68 | 20.83 | 7.15 | P00976, P00816 |
| RS999005 | L1 | L1 | 17.6 | 28.67 | 11.07 | P00934 |
| RS999006 | L1 | L1 | 11.87 | 17.33 | 5.46 | P00915, P01057, P00927 |
| RS999008 | LS50 | LS50 | 14.11 | 21.53 | 7.42 | P00920, P01020 |
| RS999009 | S4 | LS38 | 16.09 | 26.1 | 10.01 | P01192 |

Rancho® only engineers its shock absorbers for the applications listed in this catalog. Misapplication of Rancho® shock absorbers will result in reduced handling and braking ability and voids warranty. Product Specifications Subject To Change Without Notice.



Specifications — Shock Absorbers

All listed specifications are for convenience only and are subject to change without notice. Specifications are not intended for design of custom applications.

NOTE: Internal extension bumper may reduce perceived extended length by ½". Extended and collapsed length dimensions shown for RS5000 shocks, others may vary slightly.

| PART NO. | MOUNTING CODES | | LENGTHS | | | PARTS PACK(S) |
|--|----------------|-------|---------|----------|--------|------------------------|
| | UPPER | LOWER | COMP. | EXTENDED | TRAVEL | |
| RANCHO® RS9000XL SHOCK ABSORBERS (Cont.) | | | | | | |
| RS999010 | L1 | L1 | 16.36 | 26.04 | 9.68 | P01057, P00920 |
| RS999012 | L1 | L1 | 19.41 | 32.29 | 12.88 | P00934, P00915 |
| RS999014 | S4 | S4 | 15.17 | 24.58 | 9.41 | P01192 |
| RS999017 | S4 | LS50 | 15.66 | 25.15 | 9.49 | P00829, P01192 |
| RS999023 | LS47 | LS47 | 14.94 | 22.57 | 7.63 | None |
| RS999024 | LS26 | LS26 | 15.87 | 24.6 | 8.73 | None |
| RS999028 | L1 | L1 | 17.25 | 27.96 | 10.71 | P00934, P00915 |
| RS999029 | S42 | LS26 | 10.39 | 14.55 | 4.16 | P01192 |
| RS999034 | L1 | L1 | 20.27 | 34.01 | 13.74 | P01013, P00915 |
| RS999036 | L1 | L1 | 21.33 | 36.13 | 14.8 | P01013, P00915 |
| RS999036A | L1 | LS78 | 21.39 | 36.15 | 14.76 | None |
| RS999039 | S4 | L1 | 10.39 | 14.55 | 4.16 | P01192, P01013 |
| RS999040 | S42 | LS23 | 14.28 | 22.34 | 8.06 | P01192 |
| RS999042 | S51 | LS47 | 13.95 | 20.61 | 6.66 | P01356 |
| RS999043 | S51 | LS47 | 15.2 | 23.11 | 7.91 | P01356 |
| RS999044 | S51 | LS47 | 15.95 | 24.6 | 8.65 | P01356 |
| RS999045 | LS50 | LS26 | 19.92 | 33.31 | 13.39 | None |
| RS999046 | L1 | LS26 | 16.65 | 26.76 | 10.11 | None |
| RS999046A | L1 | LS48 | 16.75 | 26.76 | 10.01 | None |
| RS999047 | L1 | LS26 | 18.87 | 31.21 | 12.34 | None |
| RS999047A | L1 | LS78 | 18.93 | 31.23 | 12.3 | None |
| RS999048 | S51 | LS47 | 16.92 | 26.54 | 9.62 | P01356 |
| RS999050 | L1 | LS26 | 18.12 | 29.19 | 11.07 | None |
| RS999054 | LS47 | LS44 | 15.22 | 23.41 | 8.19 | None |
| RS999055 | S51 | LS42 | 15.46 | 23.2 | 5.46 | P01356 |
| RS999056 | LS47 | LS47 | 19.49 | 32.27 | 12.78 | None |
| RS999057 | S42 | CLEV | 15.03 | 22.98 | 7.95 | P01192 |
| RS999058 | LS47 | LS47 | 18.24 | 29.74 | 11.5 | None |
| RS999059 | LS77 | LS39 | 15.69 | 24.38 | 8.69 | None |
| RS999060 | XP7 | LS47 | 18.563 | 30.47 | 11.91 | None |
| RS999061 | S42 | XP4 | 16.52 | 26.75 | 10.23 | P01358 |
| RS999062 | XP12 | LS24 | 16 | 25.2 | 9.2 | None |
| RS999063 | LS97 | LS38 | 16.56 | 21.96 | 5.4 | None |
| RS999064 | LS97 | LS38 | 17.81 | 24.4 | 6.59 | None |
| RS999065 | LS97 | LS38 | 18.16 | 25.21 | 7.05 | None |
| RS999066 | LS97 | LS38 | 19.89 | 28.59 | 8.7 | None |
| RS999067 | LS97 | LS38 | 19.14 | 27.14 | 8 | None |
| RS999068 | LS97 | LS38 | 20.44 | 29.74 | 9.3 | None |
| RS999069 | LS43 | LS43 | 17.74 | 24.05 | 6.31 | None |
| RS999070 | LS43 | LS43 | 19.76 | 28.22 | 8.46 | None |
| RS999072 | S5 | LS47 | 15.83 | 24.75 | 8.93 | P01167 |
| RS999073 | LS38 | LS38 | 18.27 | 29.65 | 11.38 | None |
| RS999112 | L1 | L1 | 16.25 | 25.96 | 9.71 | P00915, P00913, P01013 |
| RS999113 | L1 | L1 | 13.28 | 20.03 | 6.75 | P00916 |
| RS999114 | L2 | L2 | 15.41 | 24.29 | 8.88 | P00939 |
| RS999115 | S4 | L1 | 13.32 | 20.57 | 7.25 | P00910, P01192 |
| RS999116 | L1 | L1 | 15.14 | 23.75 | 8.61 | P00916, P01013 |
| RS999117 | S4 | L1 | 12.37 | 18.67 | 6.3 | P01192, P00910 |
| RS999118 | L1 | L1 | 14.32 | 22.28 | 7.96 | P00915, P00912, P01013 |
| RS999119 | L1 | L1 | 11.93 | 17.33 | 5.4 | P00916 |
| RS999120 | L1 | L1 | 9.98 | 13.51 | 3.53 | P00916, P00915 |
| RS999123 | LS39 | LS39 | 11.76 | 17.35 | 5.59 | None |

Rancho® only engineers its shock absorbers for the applications listed in this catalog. Misapplication of Rancho® shock absorbers will result in reduced handling and braking ability and voids warranty. Product Specifications Subject To Change Without Notice.

Specifications — Shock Absorbers



All listed specifications are for convenience only and are subject to change without notice. Specifications are not intended for design of custom applications.

NOTE: Internal extension bumper may reduce perceived extended length by ½". Extended and collapsed length dimensions shown for RS5000 shocks, others may vary slightly.

| PART NO. | MOUNTING CODES | | LENGTHS | | | PARTS PACK(S) |
|--|----------------|-------|---------|----------|--------|------------------------|
| | UPPER | LOWER | COMP. | EXTENDED | TRAVEL | |
| RANCHO® RS9000XL SHOCK ABSORBERS (Cont.) | | | | | | |
| RS999124 | XP7 | LS47 | 15.25 | 23.67 | 8.42 | None |
| RS999126 | L1 | LS26 | 16.36 | 26.04 | 9.68 | None |
| RS999128 | S4 | XP11 | 13.39 | 20.49 | 7.1 | P01358, P00941 |
| RS999129 | XP12 | L1 | 13.36 | 19.91 | 6.55 | None |
| RS999136 | S4 | L1 | 11.53 | 16.84 | 5.31 | P01192, P00910, P01013 |
| RS999143 | L3 | L3 | 16.05 | 25.06 | 9.01 | None |
| RS999144 | L3 | L3 | 14.43 | 21.88 | 7.45 | None |
| RS999145 | S4 | LS82 | 9.77 | 13.33 | 3.56 | P01192 |
| RS999147 | LS74 | LS74 | 15.06 | 23.01 | 7.95 | None |
| RS999149 | LS27 | LS27 | 17.55 | 27.82 | 10.27 | None |
| RS999150 | LS77 | LS39 | 11.64 | 16.58 | 4.94 | None |
| RS999151 | LS37 | LS37 | 12.61 | 18.53 | 5.92 | P00816 |
| RS999152 | LS77 | LS39 | 12.24 | 17.83 | 5.59 | None |
| RS999157 | LS54 | S5 | 14.31 | 22 | 7.75 | P01167 |
| RS999158 | S42 | L3 | 13.56 | 20.76 | 7.2 | P01192 |
| RS999159 | S4 | S4 | 13.25 | 20.92 | 7.67 | P01136 |
| RS999165 | LS26 | LS26 | 14.65 | 22.25 | 7.6 | P01059 |
| RS999166 | S4 | XP5 | 10.03 | 13.78 | 3.75 | P01192 |
| RS999168 | S4 | LS38 | 15.65 | 25.23 | 9.58 | P01192 |
| RS999179 | S4 | L1 | 14.28 | 22.34 | 8.06 | P01192 |
| RS999180 | L3 | L3 | 14.18 | 21.18 | 7 | None |
| RS999185 | XP11 | LS38 | 16.36 | 26.04 | 9.68 | P00941 |
| RS999186 | S42 | L1 | 13.4 | 20.5 | 7.1 | P01192 |
| RS999187 | S4 | L3 | 13.57 | 20.57 | 7 | P01192 |
| RS999188 | S4 | LS23 | 9.02 | 12.39 | 3.37 | P01192 |
| RS999190 | XP7 | LS47 | 16.49 | 26.34 | 9.85 | None |
| RS999194 | L1 | LS25 | 14.85 | 23.07 | 8.22 | None |
| RS999195 | S5 | LS92 | 10.13 | 13.8 | 3.67 | P01356 |
| RS999197 | S5 | LS92 | 14.35 | 21.9 | 7.55 | P01356 |
| RS999198 | LS47 | LS47 | 15.91 | 25.08 | 9.17 | None |
| RS999201 | S42 | S42 | 12.19 | 18.54 | 6.35 | P01192 |
| RS999202 | L3 | L3 | 15.3 | 23.6 | 8.3 | P00888 |
| RS999204 | S4 | S4 | 11.83 | 17.88 | 6.05 | P01192 |
| RS999207 | S5 | S5 | 14.7 | 23.37 | 8.67 | P01356 |
| RS999208 | S5 | L3 | 14.84 | 23.17 | 8.33 | P01356 |
| RS999213 | S42 | LS82 | 12.26 | 18.13 | 5.87 | P01192 |
| RS999214 | S4 | LS23 | 10.39 | 14.55 | 4.16 | P01192 |
| RS999215 | LS78 | L3 | 13.18 | 19.28 | 6.1 | None |
| RS999221 | S5 | LS92 | 15.3 | 23.8 | 8.5 | P01356 |
| RS999223 | S4 | LS24 | 9.65 | 13.06 | 3.41 | P01192 |
| RS999226 | L3 | L3 | 13.3 | 19.82 | 6.52 | None |
| RS999227 | XP7 | LS47 | 16.94 | 27.23 | 10.29 | None |
| RS999229 | S4 | XP5 | 14.06 | 18.01 | 3.95 | P01192, P00941 |
| RS999233 | S5 | LS39 | 10.35 | 14.4 | 4.05 | P01356 |
| RS999234 | S4 | LS26 | 16.53 | 26.99 | 10.46 | P01192 |
| RS999235 | S5 | XP5 | 10.75 | 14.9 | 4.15 | P01356 |
| RS999236 | S4 | LS26 | 14.78 | 23.89 | 9.11 | P01192 |
| RS999237 | S5 | LS39 | 12.17 | 18.03 | 5.86 | P01356 |
| RS999238 | S4 | LS26 | 17.37 | 28.66 | 11.29 | P01192 |
| RS999239 | S4 | XP4 | 14.66 | 23.11 | 8.45 | P01192 |
| RS999240 | XP12 | LS24 | 12.86 | 19.22 | 6.36 | None |
| RS999241 | XP12 | LS24 | 13.73 | 20.99 | 7.26 | None |

Rancho® only engineers its shock absorbers for the applications listed in this catalog. Misapplication of Rancho® shock absorbers will result in reduced handling and braking ability and voids warranty. Product Specifications Subject To Change Without Notice.



Specifications — Shock Absorbers

All listed specifications are for convenience only and are subject to change without notice. Specifications are not intended for design of custom applications.

NOTE: Internal extension bumper may reduce perceived extended length by ½". Extended and collapsed length dimensions shown for RS5000 shocks, others may vary slightly.

| PART NO. | MOUNTING CODES | | LENGTHS | | | PARTS PACK(S) |
|--|----------------|-------|---------|----------|--------|----------------|
| | UPPER | LOWER | COMP. | EXTENDED | TRAVEL | |
| RANCHO® RS9000XL SHOCK ABSORBERS (Cont.) | | | | | | |
| RS999244 | LS77 | LS39 | 14.31 | 21.76 | 7.45 | None |
| RS999245 | XP6 | LS2 | 15.66 | 24.63 | 8.97 | |
| RS999248 | LS28 | LS28 | 15.37 | 23.97 | 8.6 | None |
| RS999250 | S4 | LS23 | 10.03 | 13.78 | 3.75 | P01192 |
| RS999254 | L1 | LS26 | 18.52 | 30.51 | 11.99 | None |
| RS999255 | S4 | XP4 | 16.15 | 26.01 | 9.86 | P01358 |
| RS999256 | XP12 | LS24 | 15.36 | 24.22 | 8.86 | None |
| RS999259 | L1 | LS25 | 14.11 | 21.53 | 7.42 | None |
| RS999260 | LS29 | LS25 | 14.11 | 21.53 | 7.42 | None |
| RS999261 | L1 | LS26 | 19.5 | 32.46 | 12.96 | None |
| RS999262 | LS47 | LS47 | 15.28 | 23.83 | 8.55 | None |
| RS999263 | S42 | XP7 | 10.39 | 14.45 | 4.06 | P01192 |
| RS999264 | L1 | LS26 | 15.7 | 24.34 | 8.64 | None |
| RS999265 | S4 | CLEV | 11.18 | 15.28 | 4.1 | P01192 |
| RS999266 | XP7 | LS26 | 17.31 | 28.08 | 10.77 | None |
| RS999267 | L1 | LS26 | 14.65 | 22.25 | 7.6 | None |
| RS999268 | S4 | CLEV | 13.93 | 20.78 | 6.85 | P01192 |
| RS999269 | LS47 | LS47 | 17.03 | 27.32 | 10.29 | None |
| RS999272 | S5 | L1 | 10.64 | 15.11 | 4.47 | P01356 |
| RS999273 | L1 | LS26 | 17.25 | 27.96 | 10.71 | None |
| RS999274 | LS47 | LS47 | 16.52 | 26.3 | 9.78 | None |
| RS999275 | XP7 | LS26 | 19.54 | 32.76 | 13.22 | None |
| RS999276 | S5 | LS47 | 12.02 | 17.44 | 5.42 | P01356 |
| RS999278 | XP7 | LS26 | 15.64 | 25.07 | 9.43 | None |
| RS999279 | S51 | XP8 | 11.27 | 16.43 | 5.16 | P01356 |
| RS999280 | S5 | LS92 | 13.85 | 20.9 | 7.05 | P01356 |
| RS999281 | S5 | XP12 | 10.14 | 14.18 | 4.04 | P01356 |
| RS999282 | S5 | LS92 | 11.65 | 16.5 | 4.85 | P01356 |
| RS999283 | S5 | LS92 | 13.35 | 19.9 | 6.55 | P01356 |
| RS999284 | LS29 | LS28 | 14.38 | 22.08 | 7.7 | None |
| RS999285 | LS38 | LS38 | 15.82 | 24.9 | 9.08 | None |
| RS999286 | LS38 | LS38 | 17.03 | 27.33 | 10.3 | None |
| RS999287 | LS38 | LS38 | 18.61 | 30.47 | 11.86 | None |
| RS999288 | S51 | LS42 | 11.03 | 15.35 | 2.04 | P01356 |
| RS999289 | S51 | LS42 | 14.07 | 21.41 | 5.06 | P01356 |
| RS999291 | S4 | XP5 | 9.89 | 13.5 | 3.61 | P01192 |
| RS999292 | L3 | S4 | 9.68 | 13.19 | 3.51 | P01016, P01192 |
| RS999293 | L3 | S4 | 13.3 | 20.21 | 6.91 | P01192 |
| RS999294 | S4 | LS23 | 11.4 | 16.76 | 5.36 | P01192 |
| RS999295 | S5 | LS42 | 10.92 | 15.48 | 4.56 | P01356 |
| RS999296 | S51 | LS42 | 13.92 | 21.65 | 7.73 | P01356 |
| RS999297 | LS47 | LS47 | 18.61 | 30.47 | 11.86 | None |
| RS999299 | XP11 | LS47 | 13.86 | 20.96 | 7.1 | None |
| RS999300 | S4 | LS21 | 10.36 | 14.51 | 4.15 | P01192 |
| RS999301 | XP11 | LS47 | 14.85 | 23 | 8.15 | None |
| RS999303 | LS47 | LS44 | 15.43 | 24.12 | 8.69 | None |
| RS999304 | LS47 | LS44 | 16.96 | 27.19 | 10.23 | None |
| RS999305 | S51 | LS68 | 14.57 | 22.48 | 7.91 | P01356 |
| RS999306 | LS44 | LS44 | 12.31 | 17.74 | 5.43 | None |
| RS999307 | S51 | CLEV | 13.54 | 15.28 | 1.82 | P01356 |
| RS999308 | XP11 | LS47 | 15.2 | 23.5 | 8.3 | None |
| RS999309 | S5 | CLEV | 15.06 | 19.44 | 2.11 | P01356 |

Rancho® only engineers its shock absorbers for the applications listed in this catalog. Misapplication of Rancho® shock absorbers will result in reduced handling and braking ability and voids warranty. Product Specifications Subject To Change Without Notice.

Specifications — Shock Absorbers



All listed specifications are for convenience only and are subject to change without notice. Specifications are not intended for design of custom applications.

NOTE: Internal extension bumper may reduce perceived extended length by ½". Extended and collapsed length dimensions shown for RS5000 shocks, others may vary slightly.

| PART NO. | MOUNTING CODES | | LENGTHS | | | PARTS PACK(S) |
|--|----------------|-------|---------|----------|--------|----------------|
| | UPPER | LOWER | COMP. | EXTENDED | TRAVEL | |
| RANCHO® RS9000XL SHOCK ABSORBERS (Cont.) | | | | | | |
| RS999310 | XP11 | LS47 | 17.22 | 27.58 | 10.36 | None |
| RS999311 | L1 | LS47 | 13.84 | 21.1 | 7.26 | None |
| RS999312 | LS44 | LS44 | 10.67 | 14.68 | 4.01 | None |
| RS999313 | L1 | LS47 | 12.72 | 19.18 | 6.46 | None |
| RS999314 | L1 | LS47 | 13.12 | 20.01 | 6.89 | None |
| RS999316 | LS38 | LS38 | 18.17 | 29.38 | 11.2 | None |
| RS999317 | S51 | LS92 | 18.04 | 28.77 | 10.73 | P01356 |
| RS999318 | S4 | LS23 | 10.65 | 15.19 | 4.54 | P01192 |
| RS999319 | S42 | LS23 | 14.27 | 22.45 | 8.18 | P01192 |
| RS999320 | S42 | LS23 | 13.15 | 20.36 | 7.21 | P01192 |
| RS999321 | LS75 | LS27 | 15.16 | 23.49 | 8.33 | None |
| RS999322 | S4 | LS23 | 10.14 | 14.65 | 4.51 | P01192 |
| RS999323 | L1 | L3 | 14.15 | 21.96 | 7.81 | None |
| RS999324 | S51 | LS39 | 15.48 | 24.65 | 9.17 | P01356 |
| RS999326 | S51 | LS38 | 14.11 | 21.76 | 7.65 | P01356 |
| RS999327 | XP12 | LS39 | 13.96 | 21.16 | 7.2 | None |
| RS999328 | XP12 | LS39 | 14.72 | 22.61 | 7.89 | None |
| RS999329 | S5 | LS39 | 15.75 | 25.06 | 9.31 | P01356 |
| RS999330 | XP12 | LS38 | 16.11 | 25.7 | 9.59 | None |
| RS999331 | S5 | LS39 | 16.63 | 27.05 | 10.42 | P01356 |
| RS999332 | XP12 | LS39 | 16.85 | 27.27 | 10.42 | None |
| RS999333 | L1 | L1 | 15.23 | 23.81 | 8.58 | P00916, P01013 |
| RS999334 | L1 | S4 | 12.36 | 18.62 | 6.26 | P01134, P00910 |
| RS999337 | S4 | LS3 | 9.02 | 12.39 | 3.37 | P01192 |
| RS999338 | L1 | L1 | 12.9 | 19.46 | 6.55 | P00829 |
| RS999339 | S4 | S4 | 13.54 | 21.66 | 8.12 | P01136 |
| RS999340 | LS54 | S5 | 14.31 | 22.06 | 7.75 | P01356 |
| RS999341 | L1 | L1 | 13.16 | 20.06 | 6.9 | P00916 |
| RS999342 | S5 | S5 | 12.29 | 18.85 | 6.56 | P01356 |
| RS999343 | L3 | LS54 | 15.65 | 24.61 | 8.97 | None |
| RS999344 | L1 | L1 | 14.84 | 23.34 | 8.49 | None |
| RS999346 | LS23 | LS23 | 12.09 | 18.13 | 6.04 | None |
| RS999347 | S4 | L1 | 10.75 | 15.91 | 5.16 | P01192 |
| RS999348 | L1 | L1 | 11.56 | 17.04 | 5.48 | None |
| RS999349 | S4 | LS26 | 11.88 | 18.13 | 6.25 | P01192 |
| RS999350 | LS50 | LS50 | 15.16 | 23.79 | 8.63 | None |
| RS999351 | S4 | L1 | 11.88 | 18.13 | 6.25 | P01192 |
| RS999352 | S4 | L3 | 13.31 | 20.76 | 7.45 | P01192 |
| RS999353 | L3 | L3 | 13.92 | 21.36 | 7.44 | None |
| RS999354 | S4 | L3 | 13.8 | 21.59 | 7.79 | P01192 |
| RS999355 | L3 | L3 | 15.52 | 24.43 | 8.91 | None |
| RS999357 | S4 | L3 | 14.42 | 22.82 | 8.4 | P01192 |
| RS999358 | S6 | LS43 | 11.65 | 17.32 | 5.67 | P01482 |
| RS999359 | S6 | LS54 | 14.67 | 23.12 | 8.45 | P01482 |
| RS999361 | LS40 | LS40 | 14.53 | 22.48 | 7.95 | None |
| RS999362 | LS40 | S5 | 13.73 | 21.33 | 7.6 | P01356 |
| RS999363 | LS40 | S5 | 12.61 | 19.1 | 6.49 | P01356 |
| RS999364 | L1 | LS50 | 13.57 | 20.72 | 7.15 | None |
| RS999365 | S4 | LS44 | 14.35 | 22.71 | 8.36 | P01192 |
| RS999366 | S4 | LS25 | 12.75 | 19.81 | 7.06 | P01192 |
| RS999367 | LS47 | LS47 | 16.41 | 25.58 | 9.17 | None |
| RS999368 | S5 | XP12 | 9.86 | 13.92 | 4.06 | P01356 |

Rancho® only engineers its shock absorbers for the applications listed in this catalog. Misapplication of Rancho® shock absorbers will result in reduced handling and braking ability and voids warranty. Product Specifications Subject To Change Without Notice.



Specifications — Shock Absorbers

All listed specifications are for convenience only and are subject to change without notice. Specifications are not intended for design of custom applications.

NOTE: Internal extension bumper may reduce perceived extended length by ½". Extended and collapsed length dimensions shown for RS5000 shocks, others may vary slightly.

| PART NO. | MOUNTING CODES | | LENGTHS | | | PARTS PACK(S) |
|--|----------------|-------|---------|----------|--------|---------------|
| | UPPER | LOWER | COMP. | EXTENDED | TRAVEL | |
| RANCHO® RS9000XL SHOCK ABSORBERS (Cont.) | | | | | | |
| RS999377 | XP15 | CLEV | 13.56 | 17.95 | 4.24 | P01617 |
| RS999379 | LS47 | LS47 | 16.06 | 25.4 | 9.49 | None |
| RS999380 | XP15 | CLEV | 16.56 | 23 | 6.29 | P01617 |
| RS999381 | LS47 | LS47 | 18.06 | 29.4 | 11.49 | None |
| RS999384 | LS39 | LS39 | 17.64 | 28.55 | 10.91 | None |

Specifications — Struts



All listed specifications are for convenience only and are subject to change without notice. Specifications are not intended for design of custom applications.

NOTE: Internal extension bumper may reduce perceived extended length by ½". Extended and collapsed length dimensions shown for RS5000 shocks, others may vary slightly.

| PART NO. | STRUT BODY TYPE | LENGTHS | | | PARTS PACK(S) |
|------------------------|--------------------|---------|----------|--------|----------------|
| | | COMP. | EXTENDED | TRAVEL | |
| RANCHO® RS5000 STRUTS | | | | | |
| RS5753 | SS3 | 17.59 | 20.42 | 2.83 | P01611 |
| RS5754 | SS3 | 13.52 | 19.39 | 5.87 | P01611 |
| RS5770 | SS3 | 11.04 | 15.81 | 4.77 | P01612 |
| RS5774 | SS2 | 15.7 | 20.64 | 4.94 | P01764 |
| RS5786 | SS7 | 18.86 | 22.6 | 3.74 | P01763, P01415 |
| RS5828 | SS2 | 16.89 | 21.83 | 4.94 | P01167 |
| RANCHO® RS5000X STRUTS | | | | | |
| RS55753 | SS3 | 19.33 | 20.44 | 1.12 | P01611 |
| RS55754 | SS3 | 15.88 | 19.43 | 3.55 | P01611 |
| RS55757 | SS4 | 13.56 | 18.08 | 4.52 | None |
| RS55758 | SS2 | 17.76 | 23.55 | 5.76 | P01613 |
| RS55762 | SS3 | 13.62 | 18.19 | 4.57 | P01612 |
| RS55763 | SS2 | 13.5 | 20.11 | 6.61 | P01612 |
| RS55764 | SPEC | 9.70 | 13.82 | 4.12 | None |
| RS55766 | SS2 | 13.62 | 18.49 | 4.87 | P01612 |
| RS55767 | SS2 | 17.3 | 21.63 | 4.33 | P01764 |
| RS55769 | SS2 | 21.37 | 26.19 | 4.82 | P01771 |
| RS55770 | SS3 | 11.19 | 15.96 | 4.77 | P01612 |
| RS55773 | SS3 | 14.97 | 18.80 | 3.83 | P01614 |
| RS55774 | SS2 | 15.77 | 20.71 | 4.94 | P01764 |
| RS55775 | SS3 | 12.52 | 16.44 | 3.92 | P00762 |
| RS55776 | SS3 | 12.52 | 16.44 | 3.92 | P00762 |
| RS55777 | SS2 | 16.62 | 22.43 | 5.81 | P01613 |
| RS55784 | SS7 | 13.91 | 17.72 | 3.81 | P01763, P01415 |
| RS55785 | SS7 | 14.17 | 17.99 | 3.82 | P01763, P01415 |
| RS55786 | SS7 | 18.84 | 22.51 | 3.67 | P01763, P01415 |
| RS55788 | SS5 | 15.43 | 21.19 | 5.76 | P01768 |
| RS55789 | SS4 | 18.69 | 24.5 | 5.81 | P01768 |
| RS55803 | SS2 | 16.47 | 20.89 | 4.42 | P01770 |
| RS55804 | SS2 | 17.17 | 21.64 | 4.47 | P01770 |
| RS55806 | SS2 | 21.62 | 26.09 | 4.62 | P01770 |
| RS55808 | SS4 | 15.43 | 21.19 | 5.76 | P01768 |
| RS55810 | SS4 | 18.69 | 24.5 | 5.81 | P01768 |
| RS55813 | B11 | 15.73 | 22.6 | 6.87 | P00762 |
| RS55814 | B11 | 15.73 | 22.6 | 6.87 | P00762 |
| RS55815 | B10 | 15.62 | 22.6 | 6.98 | P00762 |
| RS55816 | B10 | 15.62 | 22.6 | 6.98 | P00762 |
| RS55817 | B4 | 11.07 | 16.08 | 5.01 | None |
| RS55826 | B3 | 13.92 | 20.25 | 6.33 | None |
| RS55827 | SS3 | 10.8 | 14.63 | 3.83 | P01614 |
| RS55829 | SS4 | 14.06 | 18.08 | 4.02 | P01632, P01650 |
| RS55830 | SS7 | 13.57 | 16.84 | 3.27 | P01788, P01415 |
| RS55831 | SS7 | 13.98 | 17.48 | 3.5 | P01788, P01415 |
| RS55832 | SS7 | 20.31 | 23.76 | 3.45 | P01788, P01415 |
| RS55833 | SS2 | 21.62 | 26.09 | 4.62 | P01770 |
| RS55834 | SS7 | 16.47 | 20.89 | 4.42 | P01726 |
| RS55836 | SS7 | 17.18 | 21.63 | 4.43 | P01726 |
| RS55838 | SS7 | 21.62 | 26.09 | 4.62 | P01726, P01764 |
| RS55839 | SS7 | 22.44 | 26.89 | 4.45 | P01726, P01764 |
| RS55840 | SS2 | 14.56 | 19.27 | 4.81 | P01431 |
| RS55842 | SPEC | 26.417 | 30.693 | 4.276 | P00839 |

Rancho® only engineers its shock absorbers for the applications listed in this catalog. Misapplication of Rancho® shock absorbers will result in reduced handling and braking ability and voids warranty. Product Specifications Subject To Change Without Notice.



Specifications — Struts

All listed specifications are for convenience only and are subject to change without notice. Specifications are not intended for design of custom applications.

NOTE: Internal extension bumper may reduce perceived extended length by ½". Extended and collapsed length dimensions shown for RS5000 shocks, others may vary slightly.

| PART NO. | STRUT BODY TYPE | LENGTHS | | | PARTS PACK(S) |
|--|--------------------|---------|----------|--------|------------------------|
| | | COMP. | EXTENDED | TRAVEL | |
| RANCHO® RS5000X STRUTS (Cont.) | | | | | |
| RS55845 | SS7 | 15.61 | 21.18 | 5.57 | P01763, P01577 |
| RS55847 | SS4 | 16.54 | 22.08 | 5.54 | P01768 |
| RS55852 | SS7 | 15.94 | 18.88 | 2.94 | P01726 |
| RS55865 | SS2 | 15.87 | 20.86 | 4.99 | P01726 |
| RS55868 | SS2 | 16.94 | 21.89 | 4.95 | P01726 |
| RANCHO® RS7000MT STRUTS | | | | | |
| RS7804 | SS2 | 16.93 | 21.85 | 4.92 | P01659 |
| RS7805 | SS2 | 16.93 | 21.85 | 4.92 | P01659 |
| RS7833 | SS2 | 21.27 | 26.19 | 4.921 | P01659 |
| RS7838 | SS7 | 21.27 | 26.19 | 4.92 | P01659, P01726 |
| RS7841 | SS2 | 15.08 | 19.51 | 4.43 | P01749 |
| RANCHO® RS9000XL STRUTS | | | | | |
| RS999758 | SS2 | 17.88 | 23.51 | 5.63 | P01613 |
| RS999762 | SS3 | 13.73 | 18.21 | 4.48 | P01612 |
| RS999763 | SS3 | 13.5 | 18.44 | 3.28 | P01612 |
| RS999764 | B4 | 7.62 | 12.07 | 4.45 | P01372 |
| RS999766 | SS3 | 13.73 | 17.96 | 4.23 | P01612 |
| RS999767 | SS1 | 16.7 | 21.71 | 5.01 | P01499 |
| RS999769 | SS2 | 21.38 | 26.39 | 5.02 | P01771, P01576 |
| RS999773 | SS3 | 15.06 | 18.77 | 3.71 | P01614 |
| RS999774 | SS2 | 15.65 | 20.67 | 5.02 | P01771 |
| RS999777 | SS2 | 16.73 | 22 | 5.27 | P01613 |
| RS999782 | SS2 | 17.07 | 22 | 4.93 | P01613 |
| RS999784 | SS7 | 13.84 | 17.68 | 3.84 | P01763, P01415 |
| RS999786 | SS7 | 18.96 | 22.6 | 3.74 | P01763, P01415 |
| RS999787 | SS3 | 10.97 | 14.98 | 4.01 | P01614 |
| RS999788 | SS6 | 15.76 | 21.14 | 5.38 | P01768 |
| RS999789 | SS6 | 18.64 | 24.44 | 5.8 | P01768 |
| RS999799 | SPEC | 18.96 | 22.8 | 3.84 | P01763, P01415, P01510 |
| RS999801 | SS3 | 12.38 | 16.75 | 4.37 | P01356 |
| RS999802 | SS2 | 13.32 | 18.62 | 5.3 | P01431 |
| RS999803 | SS2 | 16.41 | 20.87 | 4.46 | P01770 |
| RS999804 | SS2 | 17.13 | 21.6 | 4.51 | P01770 |
| RS999806 | SS2 | 21.81 | 26.28 | 4.47 | P01770, P01576 |
| RS999808 | SS4 | 14.6 | 21.19 | 7.19 | P01768 |
| RS999830 | SS7 | 13.57 | 16.86 | 3.28 | P01788, P01415 |
| RS999832 | SS7 | 20.36 | 23.81 | 3.45 | P01788, P01415 |
| RS999834 | SS7 | 16.44 | 20.91 | 4.46 | P01726 |
| RS999836 | SS2 | 17.18 | 22.16 | 4.98 | P01764, P01726 |
| RS999838 | SS1 | 21.46 | 26.41 | 4.95 | P01764, P01726 |
| RS999845 | SS7 | 16.12 | 21.18 | 5.06 | P01577, P01763 |
| RANCHO® LOADED quickLIFT COMPLETE STRUT ASSEMBLIES | | | | | |
| RS999901 | SS7 | 13.81 | 18.06 | 4.25 | P01577 |
| RS999902 | SS3 | 16.7 | 21.71 | 5.01 | P01141 |
| RS999903 | SS3 | 14.67 | 21.6 | 6.93 | P01141 |
| RS999905 | SS3 | 13.98 | 19.75 | 5.77 | P01113 |
| RS999907 | SS3 | 14.11 | 18.75 | 4.64 | P01101 |
| RS999908 | SS3 | 14.11 | 18.75 | 4.64 | P01101 |
| RS999909 | SS3 | 16.7 | 21.71 | 5.01 | P01141 |
| RS999910 | SS3 | 17.19 | 22.21 | 5.02 | P01141 |

Rancho® only engineers its shock absorbers for the applications listed in this catalog. Misapplication of Rancho® shock absorbers will result in reduced handling and braking ability and voids warranty. Product Specifications Subject To Change Without Notice.

Specifications — Struts



All listed specifications are for convenience only and are subject to change without notice. Specifications are not intended for design of custom applications.

NOTE: Internal extension bumper may reduce perceived extended length by ½". Extended and collapsed length dimensions shown for RS5000 shocks, others may vary slightly.

| PART NO. | STRUT BODY TYPE | LENGTHS | | | PARTS PACK(S) |
|--|--------------------|---------|----------|--------|----------------|
| | | COMP. | EXTENDED | TRAVEL | |
| RANCHO® LOADED quickLIFT COMPLETE STRUT ASSEMBLIES (Cont.) | | | | | |
| RS999911 | SS2 | 17.13 | 21.6 | 4.47 | P01141 |
| RS999912 | SS3 | 16.41 | 20.87 | 4.46 | P01141 |
| RS999913 | SS3 | 17.13 | 21.98 | 4.85 | P01101 |
| RS999914 | SS3 | 17.13 | 21.98 | 4.85 | P01101 |
| RS999915 | SS3 | 17.13 | 21.98 | 4.85 | P01101 |
| RS999919 | SS3 | 17.88 | 23.51 | 5.63 | P01123 |
| RS999920 | SS3 | 17.88 | 23.51 | 5.63 | P01123 |
| RS999921 | SS3 | 11.29 | 15 | 3.71 | P01101 |
| RS999922 | SS3 | 11.05 | 15.06 | 4.01 | P01101 |
| RS999923 | SS3 | 13.73 | 18.04 | 4.31 | P01101 |
| RS999925 | SS3 | 16.16 | 21.3 | 5.14 | P01141 |
| RS999926 | SS2 | 15.45 | 21.2 | 5.75 | P01141 |
| RS999928 | SS7 | 13.81 | 18.06 | 4.25 | P01577, P01510 |
| RS999929 | SS5 | 15.72 | 21.22 | 5.5 | P01141 |
| RS999930 | SS5 | 15.72 | 21.22 | 5.5 | P01141 |
| RS999931 | SS3 | 13.73 | 18.04 | 4.31 | P01101 |
| RS999932 | SS3 | 16.7 | 21.71 | 5.01 | P01141 |
| RS999933 | SS3 | 14.67 | 21.6 | 6.93 | P01141 |
| RS999934 | SS3 | 13.98 | 19.75 | 5.77 | P01113 |
| RS999935 | SS2 | 17.13 | 21.6 | 4.47 | P01141 |
| RS999936 | SS3 | 16.41 | 20.87 | 4.46 | P01141 |
| RS999937 | SS3 | 11.29 | 15 | 3.71 | P01101 |
| RS999938 | | 11.05 | 15.06 | 4.01 | P01101 |
| RS999940 | SS3 | 16.16 | 21.3 | 5.14 | P01141 |
| RS999941 | SS2 | 15.45 | 21.2 | 5.75 | P01141 |
| RS999943 | SS5 | 15.72 | 21.22 | 5.5 | P01141 |
| RS999944 | SS5 | 15.72 | 21.22 | 5.5 | P01141 |
| RS999945 | SPEC | 16.93 | 22.24 | 5.31 | P01141, P01726 |
| RS999946 | SPEC | 16.93 | 22.24 | 5.31 | P01141, P01726 |
| RS999947 | SS7 | 15.98 | 21.1 | 5.12 | P01141, P01726 |
| RS999948 | SS7 | 15.98 | 21.1 | 5.12 | P01141, P01726 |
| RS999949 | SS7 | 13.85 | 18.06 | 4.21 | P01577 |
| RS999950 | | 16.21 | 21.85 | 5.64 | P01577 |
| RS999951 | | 15.08 | 19.51 | 4.43 | P01141 |
| RS999952 | | 15.08 | 19.51 | 4.43 | P01141 |
| RS999953 | SS4 | 16.60 | 22.32 | 5.72 | P01141 |
| RS999954 | | 16.60 | 22.32 | 5.72 | P01141 |